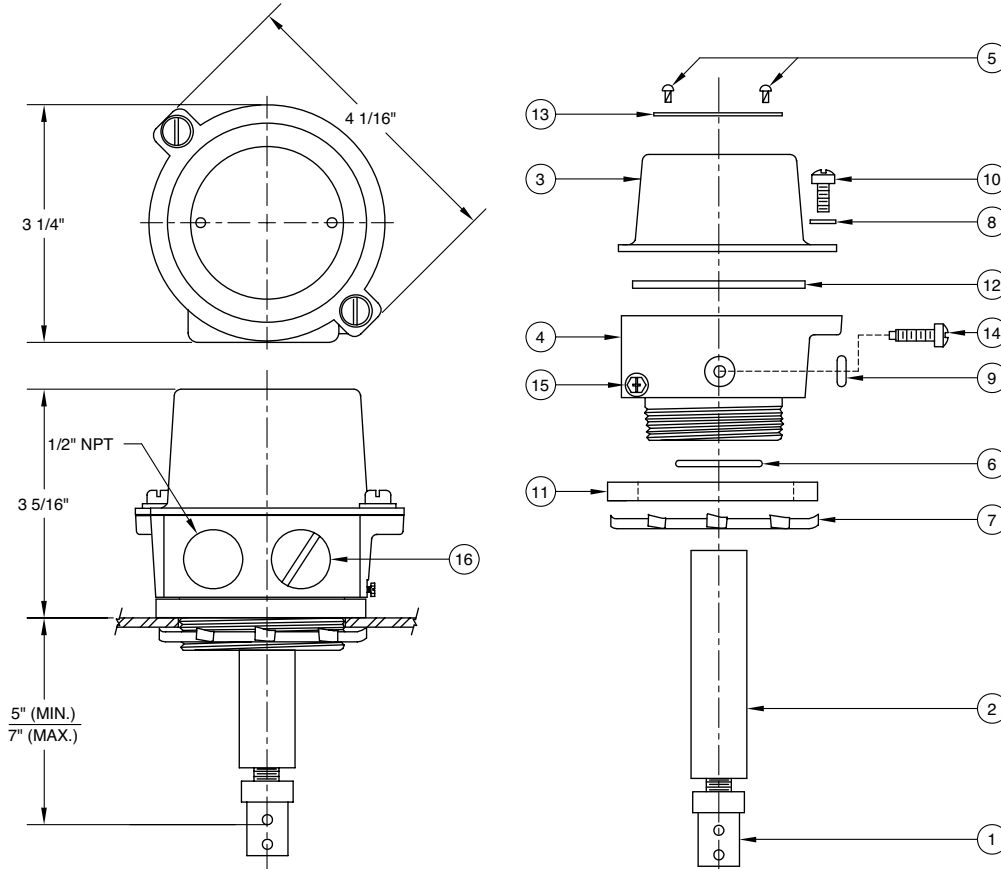




## Model #1510 Thermistor Sensor (2-Wire 2" NPT)

### Replacement Parts

Rev. 0, January 2003



| ITEM | PART NUMBER | DESCRIPTION  | QTY. |
|------|-------------|--|------|
| 1    | 1600        | REPLACEMENT THERMISTOR TIP (GREEN)                           | 1    |
| 1    | 1800        | REPLACEMENT THERMISTOR TIP (SILVER)                          | 1    |
| 2    | C40023M     | PROBE TUBE   | 1    |
| N/A  | 1355        | PROBE HOUSING (INCLUDES ALL ITEMS EXCEPT ITEMS 1, 2, 5 & 13) | N/A  |
| 3    | C40030A     | UPPER HOUSING CAP  | 1    |
| 4    | D40023A     | LOWER HOUSING BODY   | 1    |
| 5    | H50066M     | DRIVE SCREW  | 2    |
| 6    | H50080M     | O-RING (BODY SENSOR TUBE)                                    | 1    |
| 7    | H50083M     | LOCK NUT (2" N.P.T.)   | 1    |
| 8    | H50086M     | WASHER (1/4" SPLIT, S.S.)                                    | 2    |
| 9    | H50088M     | O-RING (PROBE ADJUSTING SCREW)                               | 1    |
| 10   | H50153M     | SCREW (1/4-20 X 1/2 STL, FIL, S.S.)                          | 2    |
| 11   | H50276M     | GASKET (BASE SENSOR)   | 1    |
| 12   | H50279M     | O-RING (CAP SENSOR)  | 1    |
| 13   | H50283M     | NAME PLATE (1510 SENSOR)                                     | 1    |
| 14   | H50371M     | PROBE ADJ. SET SCREW (1/4-20 X 27/32 STL, FIL, S.S.)         | 1    |
| 15   | H50524M     | GREEN GROUNDING SCREW (#8-32 X 3/8 CMB, BND, DC)             | 1    |
| 16   | H50070M     | PIPE PLUG (1/2" N.P.T.)                                      | 1    |