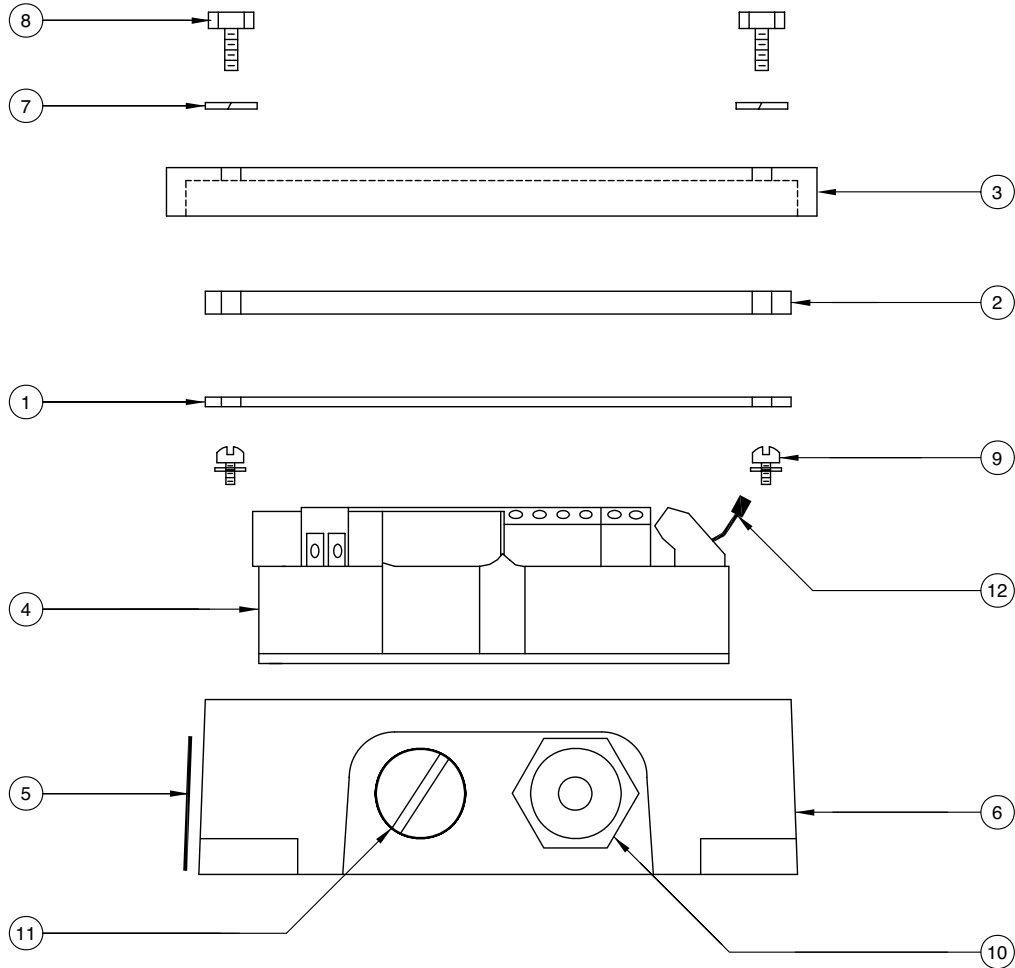




## Model #3202 ROM II On Board Monitor for use with Civacon 2-Wire Optic Sensors

### Replacement Parts

Rev. 0, January 2003



ITEM	PART NUMBER	DESCRIPTION	QTY.
1	C40015M	GASKET (ENCLOSURE, OBM)	1
2	C51426M	WINDOW (ENCLOSURE, OBM)	1
3	C40104APC	COVER (ENCLOSURE, OBM, GRAY POWDERCOATED)	1
4	3252	ASSEMBLY MODULE (OPTIC OBM)	1
5	H51425M	NAME PLATE (APPROVALS, ROM II)	1
6	D40006APC	BASE (ENCLOSURE, OBM, GRAY POWDERCOATED)	1
7	H50086M	WASHER (1/4" SPLIT, S.S.)	6
8	H50114M	SCREW (1/4-20 X 3/4, S.S.)	6
9	H50623M-2	SCREW (#6-32 X 3/8 S.S. W/LOCK WASHER)	4
10	H50452	SWITCH ASSEMBLY (1/2" N.P.T.)	1
11	H50070M	PIPE PLUG (1/2" N.P.T.)	1
12	H51642M	JUMPER STRIP (10 POSITION)	1